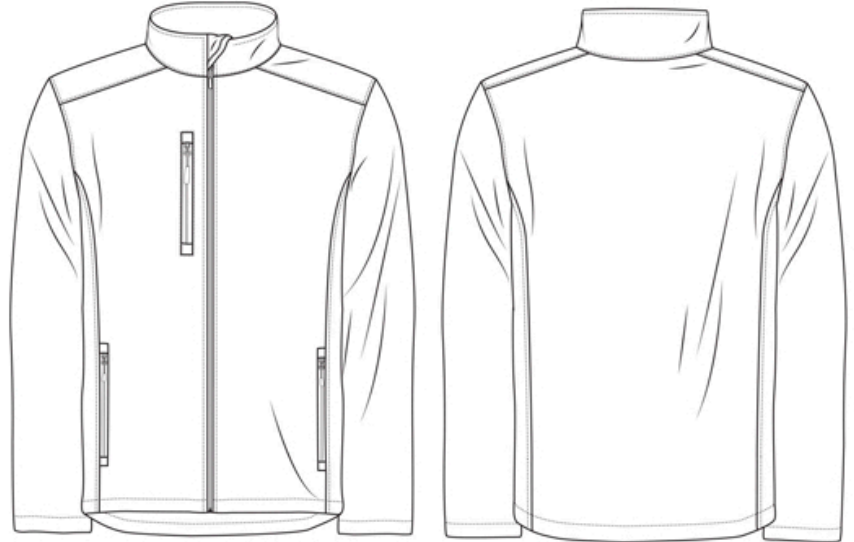


Men's soft shell full zip jacket. Chest pocket on right side as worn. Two side front zip pockets. Black zip tape applied on reverse with matching plastic moulded zip pullers. Placket zip cover. Self fabric panel to shoulder and side of garment. Taped back neck. Hanging loop attached to back neck. Straight front hem. Curved back hem with elasticated draw cord and one toggle each side. Front panels lined in polyester mesh with mesh with internal zip to access the left chest. Kustom Kit® back neck label.

Features

- Two layer soft shell - for ease of movement
- Dropped back hem
- Internal access in lining for decoration



Fabric

96% Polyester 4% Spandex bonded with
100% Polyester Micro Fleece

Weight

320gsm

Fit

Regular

Country of Origin

Bangladesh

Commodity Code

6201 13 10 90

Wash Care*



*Always carefully read the care label prior to laundering.

Colours*



BLACK
PANTONE
BLACK C/
C:0 M:0 Y:0 K:100



NAVY
PANTONE
2767 C
C:100 M:78 Y:0 K:54



GRAPHITE
PANTONE
446 C
C:21 M:0 Y:23 K:75

*These colour references are provided for replication of Kustom Kit® colours in printed materials and online only. Whilst these represent the closest possible pantone match, they should not be used as a direct comparison to actual garment colours.

Sizes and Dimensions

Size	S	M	L	XL	2XL	3XL
Chest to fit in inches	36-38	40	42	44	46-48	50-52
Actual chest in cm	106	111	116	121	126	136
Length in cm (shoulder to front hem)	68	69	69	70	70	72
Length in cm (shoulder to back hem)	72	73	73	74	74	76
Sleeve length in cm (underarm inc. cuff)	56	56	56	56	56	57

Accreditations



Tested for harmful substances.
www.oeko-tex.com/standard100

Sustainable Textile Production.
www.oeko-tex.com/step

Factory is also audited annually by BSCI (Business Social Compliance Initiative)